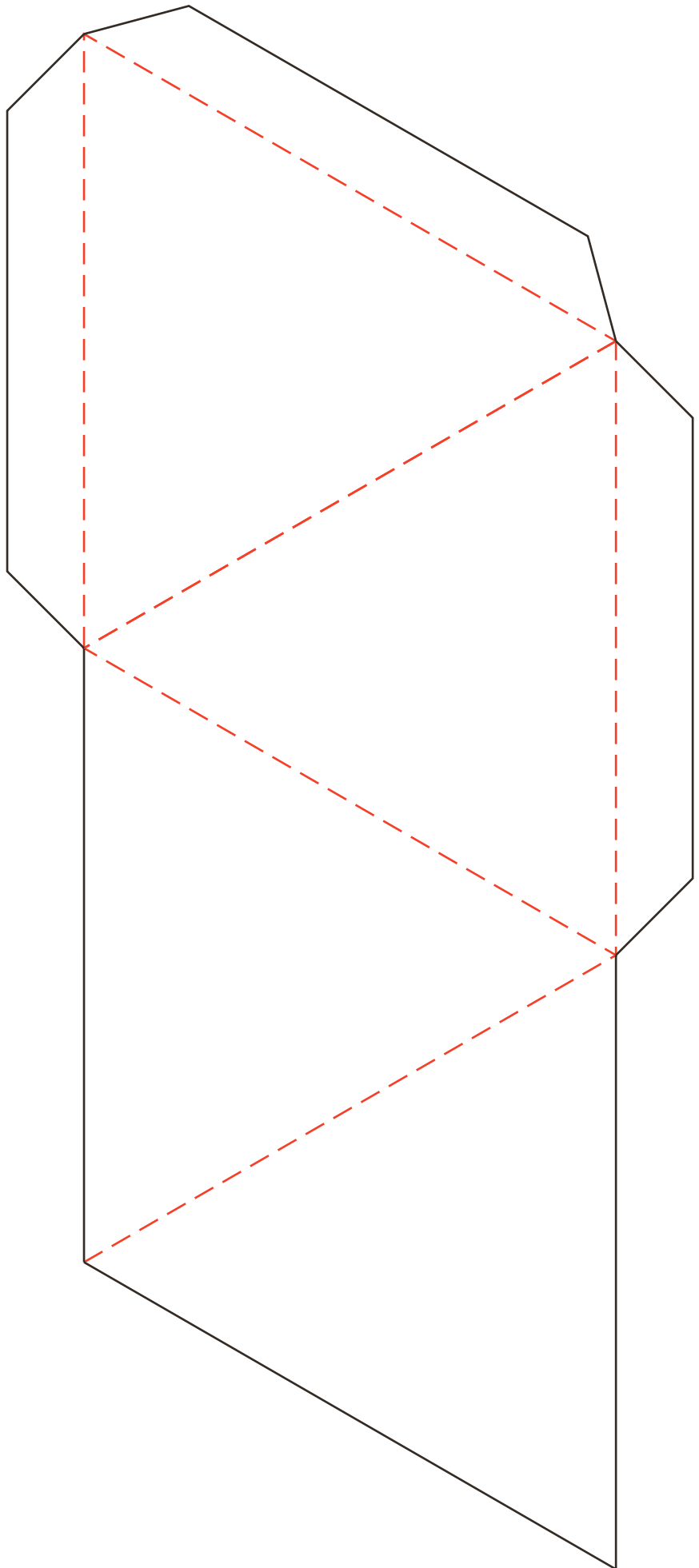
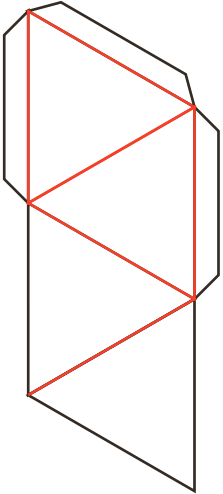


Tetrahedron

(Regular Tetrahedron 4 faces/sides)

This will work best if you print it on cardstock paper, regular paper will work but it will not be as strong.



Directions

Cut out along the black lines only do not cut along the red/dashed lines. It is best to use a scalpel or other sharp utility knife to cut and a ruler to guide your cuts.

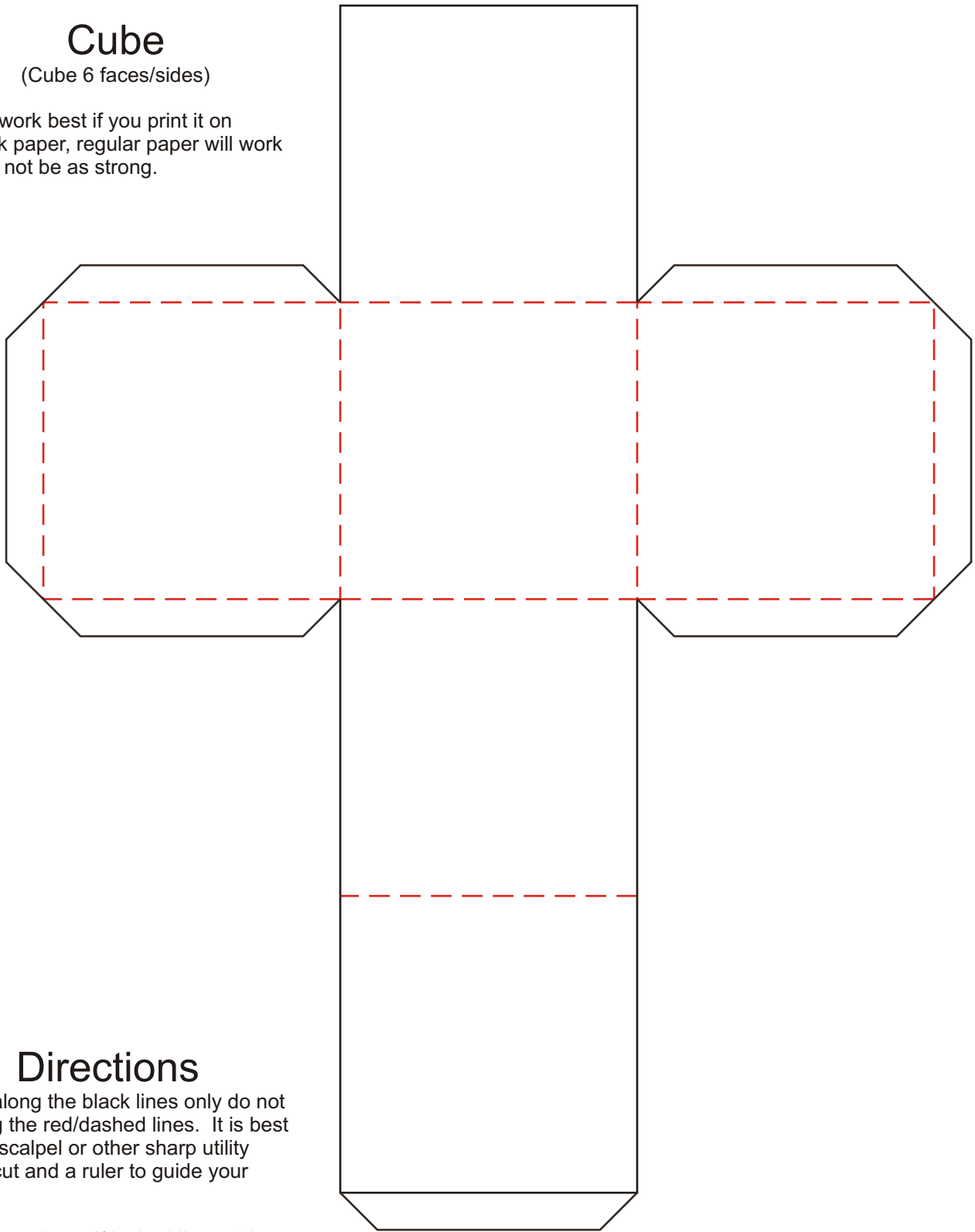
Score along the red/dashed lines, this will make it easier to fold along the red/dashed lines. (Scoring means to use a sharp pointed object and a ruler and trace along the line to make an indentation in the paper but not to cut through the paper.)

Fold along the red/dashed lines, these are the tabs that must be glued or taped to the inside of the shape to give it support.

Cube

(Cube 6 faces/sides)

This will work best if you print it on cardstock paper, regular paper will work but it will not be as strong.



Directions

Cut out along the black lines only do not cut along the red/dashed lines. It is best to use a scalpel or other sharp utility knife to cut and a ruler to guide your cuts.

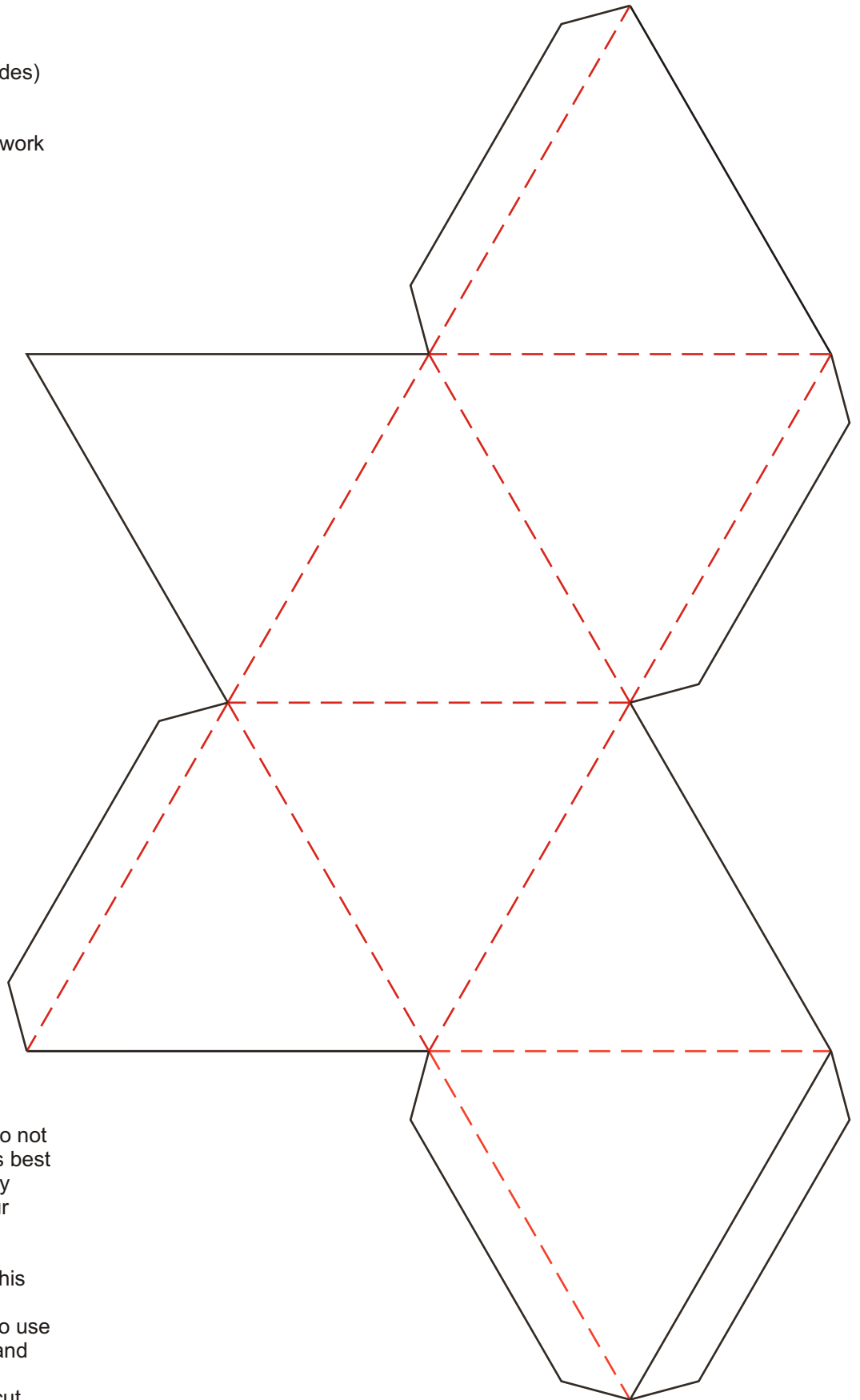
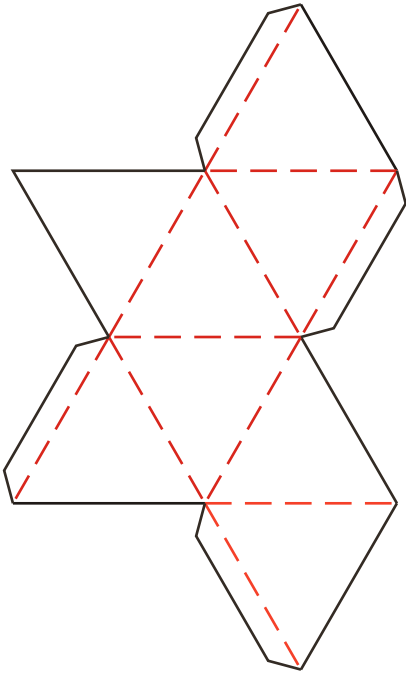
Score along the red/dashed lines, this will make it easier to fold along the red/dashed lines. (Scoring means to use a sharp pointed object and a ruler and trace along the line to make an indentation in the paper but not to cut through the paper.)

Fold along the red/dashed lines, these are the tabs that must be glued or taped to the inside of the shape to give it support.

Octahedron

(Regular Octahedron 8 faces/sides)

This will work best if you print it on cardstock paper, regular paper will work but it will not be as strong.



Directions

Cut out along the black lines only do not cut along the red/dashed lines. It is best to use a scalpel or other sharp utility knife to cut and a ruler to guide your cuts.

Score along the red/dashed lines, this will make it easier to fold along the red/dashed lines. (Scoring means to use a sharp pointed object and a ruler and trace along the line to make an indentation in the paper but not to cut through the paper.)

Fold along the red/dashed lines, these are the tabs that must be glued or taped to the inside of the shape to give it support.

ICOSAHEDRON

